

PORTFOLIO

CONTENTS



1

THESIS



2

URBAN DESIGN



3

NASA
(Competition)



4

INTERIOR



5

WORKSHOP



THESIS

In-situ Refugee Rehabilitation that helps Integrate; build social growth; economic development.

Nobody leaves their home unless they're forced to leave their home, For me, it's a story of the people. We always use the word refugee, but behind the word, [there] are people with dreams, people with stories, people with history and backgrounds," ~ Muheisen

The world we live in, has had one thing in common over generations i.e. the mass displacement of humans for varying reasons. Some leave their homes for better lives, while some are forced to. I strongly believe that refugee "camps" are essentially a short term solution to a long term problem. These are for people, who have been forced to run away from their homelands because for various biases; so to collectively put them in "tents"/temporary housing when they already suffer the loss of home leads to further psychological damage.

These temporary housings are quick as and practical as per the assumption that these people will one day return to the where they came from, yet statistically speaking in terms of the history so far, this theory itself is simply a false expectation.

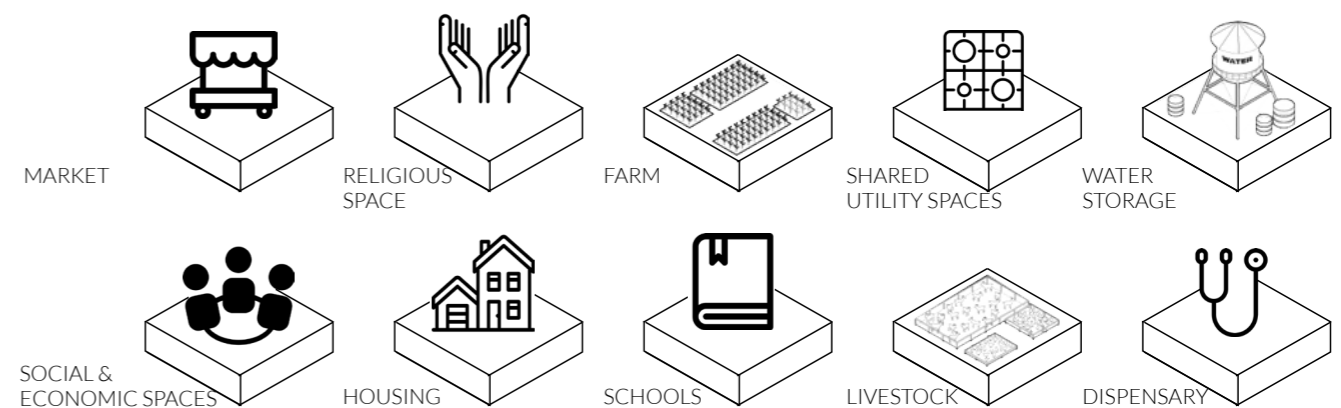
The humble state of these camps helps no one, it creates isolated sects in the city, which neither allows the surrounding area to make space for the inhabitants, nor does it let them mingle in its social fabric. This divide in the city/area further creates a nonchalant apathy toward the refugees, which leaves them homeless in another way all over again. It isn't just the psychological impact on these people that needs to be looked into, the conditions they live in aren't just minimal but so dilapidated, that they have to move multiple times again due to calamities.

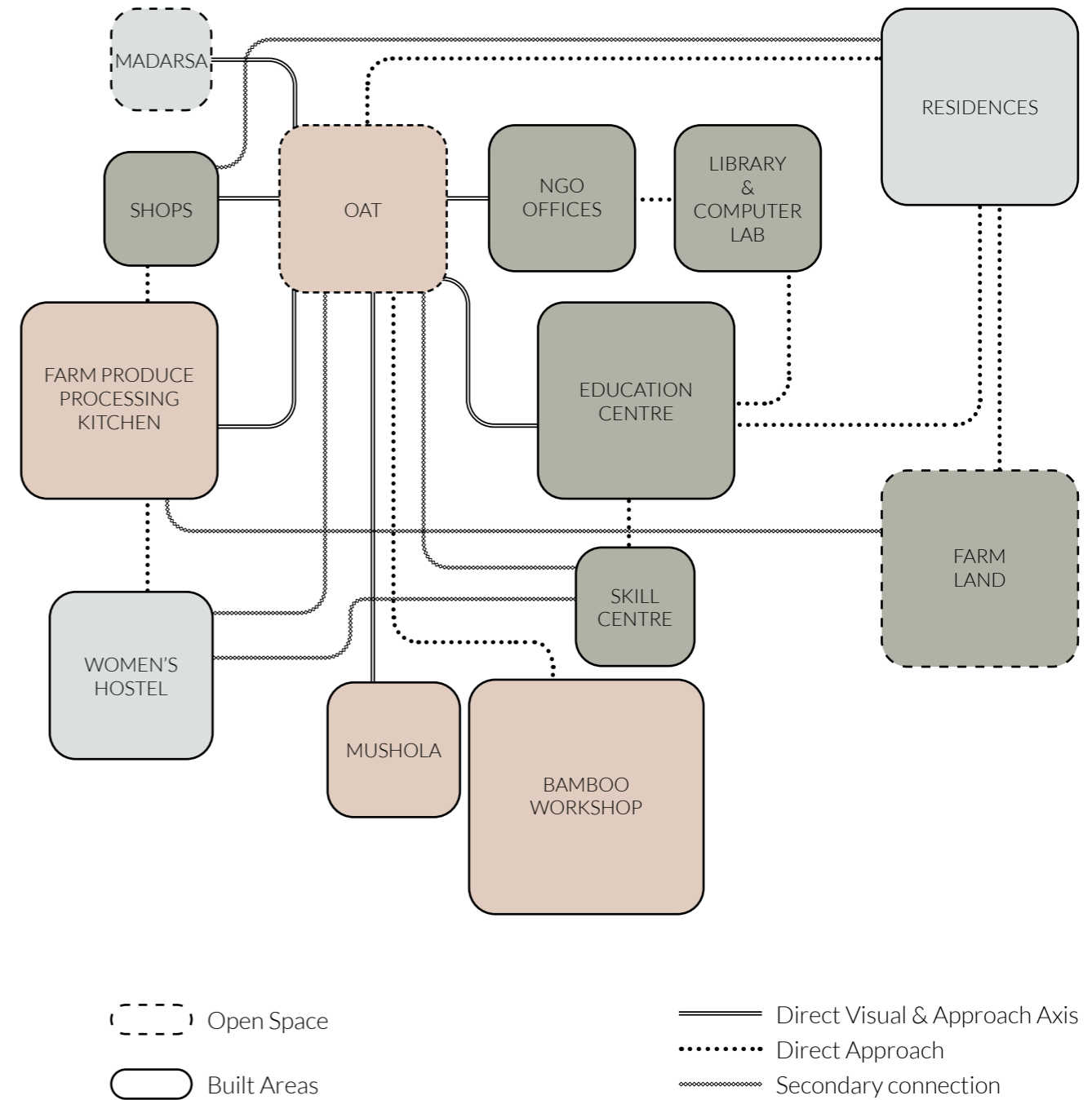
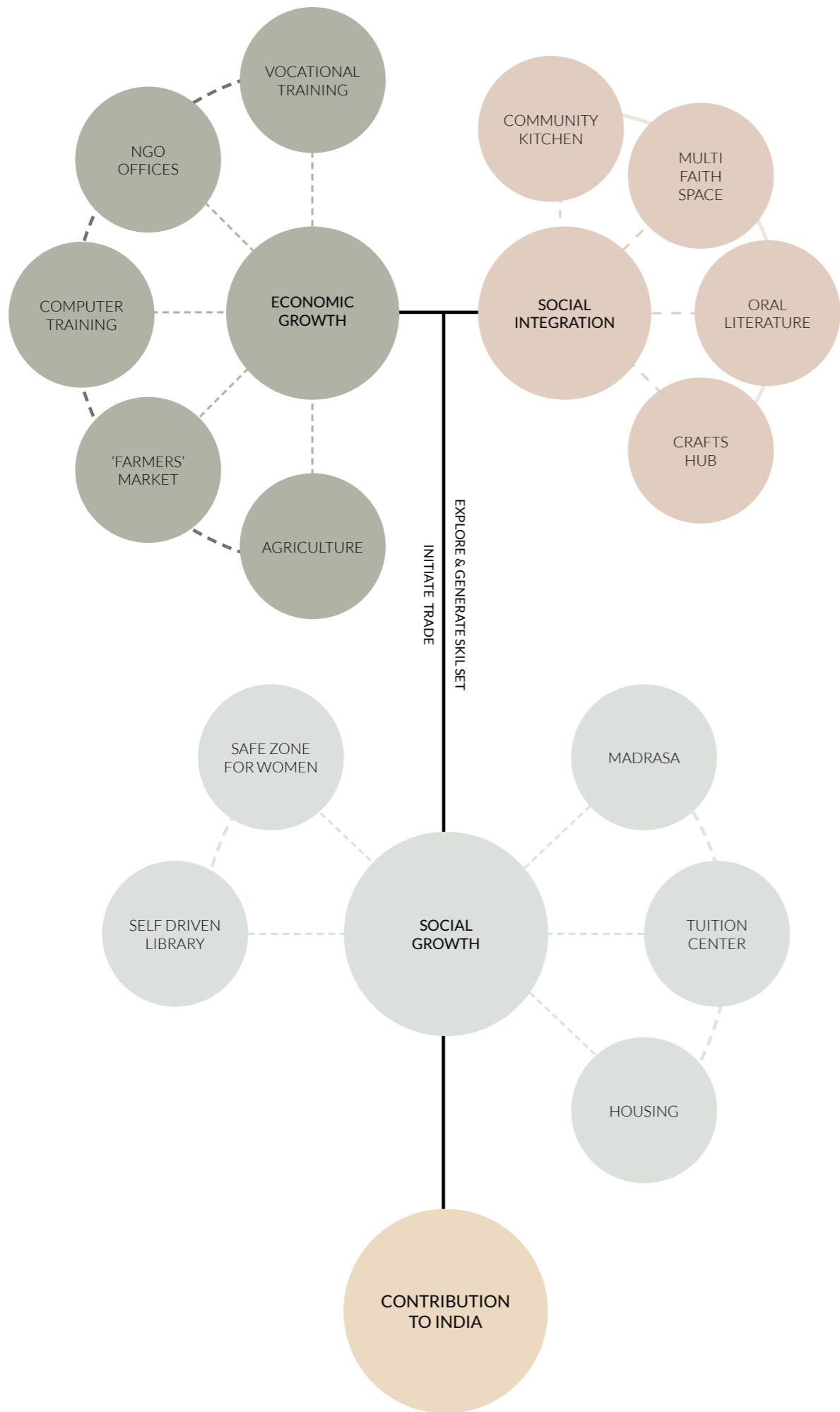
The idea is to pave the way for Incremental housing which is a step-by-step process. It's basically a phase development and is not quick, immediate or complete, but leaves the choice with the inhabitants. It begins with a core shelter which may simply be a bare lot with utilities for ex: a multi-purpose room with kitchen/toilet facilities. Leaving the inhabitants in charge of the further additions to their space helps them gain a connect as well as gives them a sense of belonging. The argument isn't just about providing housing but also building the social fabric for the future, irrespective of whether they at some point become citizens or return/leave making space for newer families. Such a scheme also forms inter linked networks that can further become self sustainable by creating small scaled commercial opportunities .

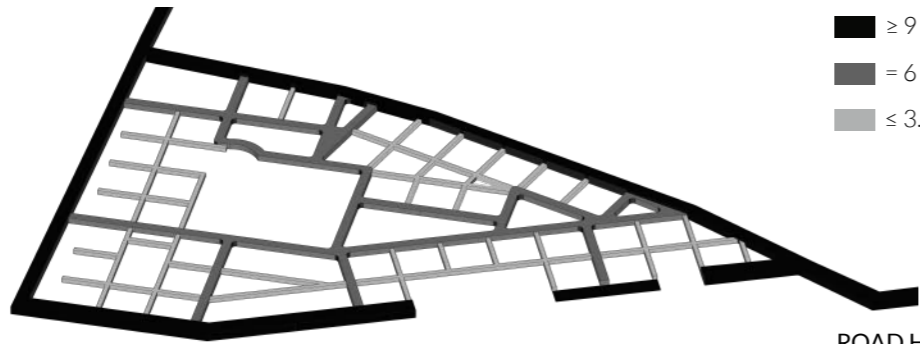
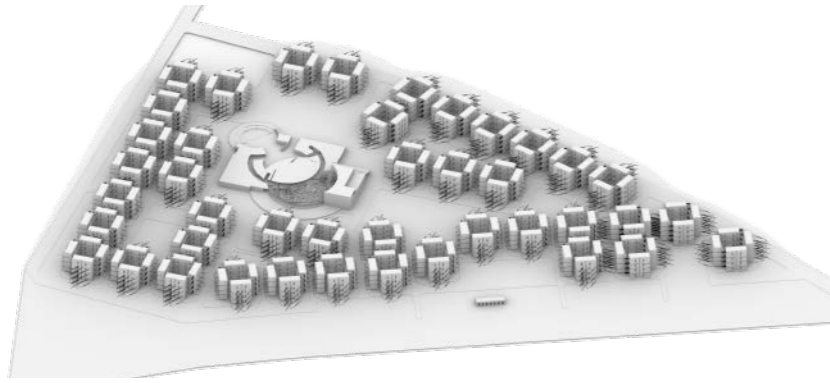
Providing the required housing is essential, as Refugees can end up staying in camps for up until twelve years or even more. The so far used tent setups, although cheap and quick, have proven to be far from adequate and can even further endanger lives.

Considering today's day and technology, new solutions for this global crisis can and need to be found. These solutions need to at least touch upon all aspects for an overall growth, keeping in mind the physical shelter they require to the importance of a social life in these camps, to the psychological help they might need.

There is a need to un-design the systems that stagnate refugees where they are, consider and then reintegrate.

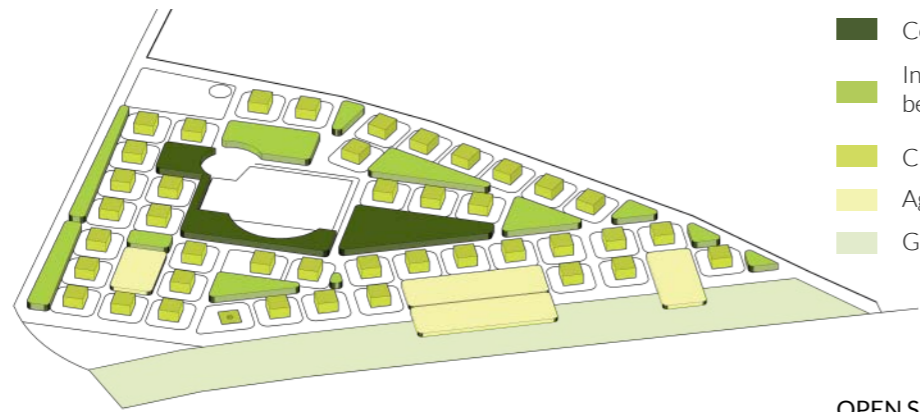






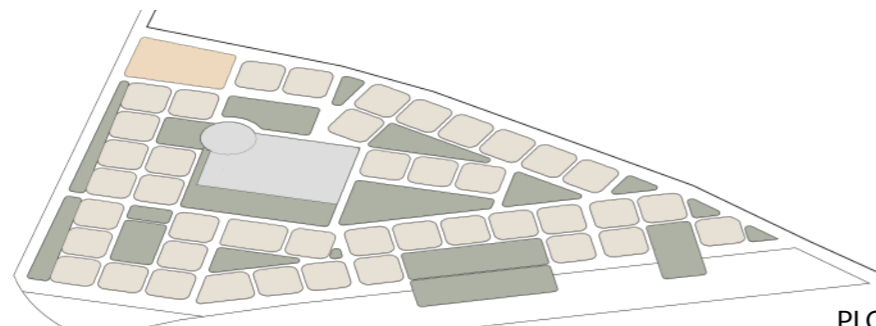
- █ ≥ 9 m
- █ = 6 m
- █ ≤ 3.5m

ROAD HIERARCHY



- █ Central Greens
- █ Intermediary Greens between clusters
- █ Cluster Courtyards
- █ Agricultural Land
- █ Greens-canal edge

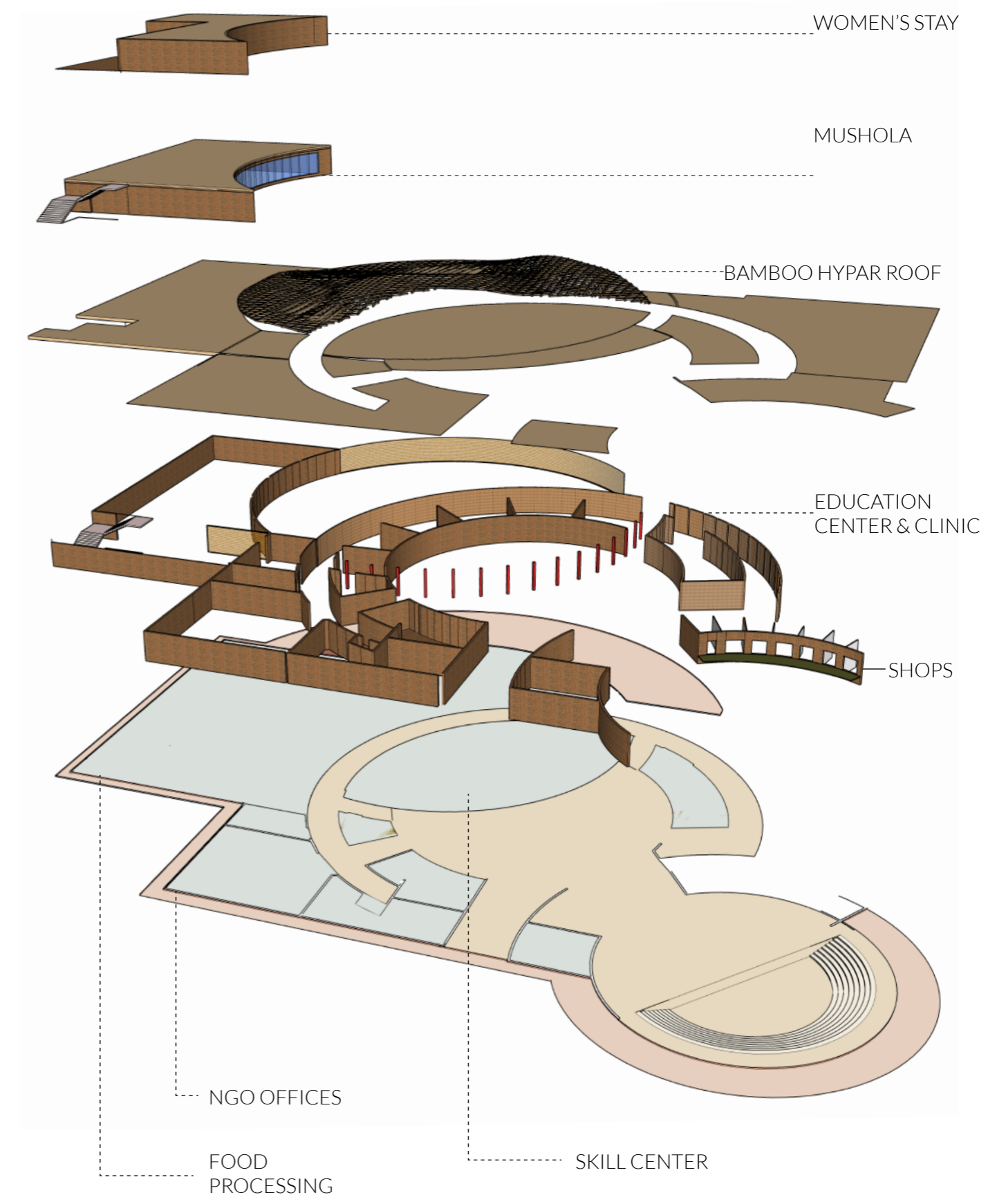
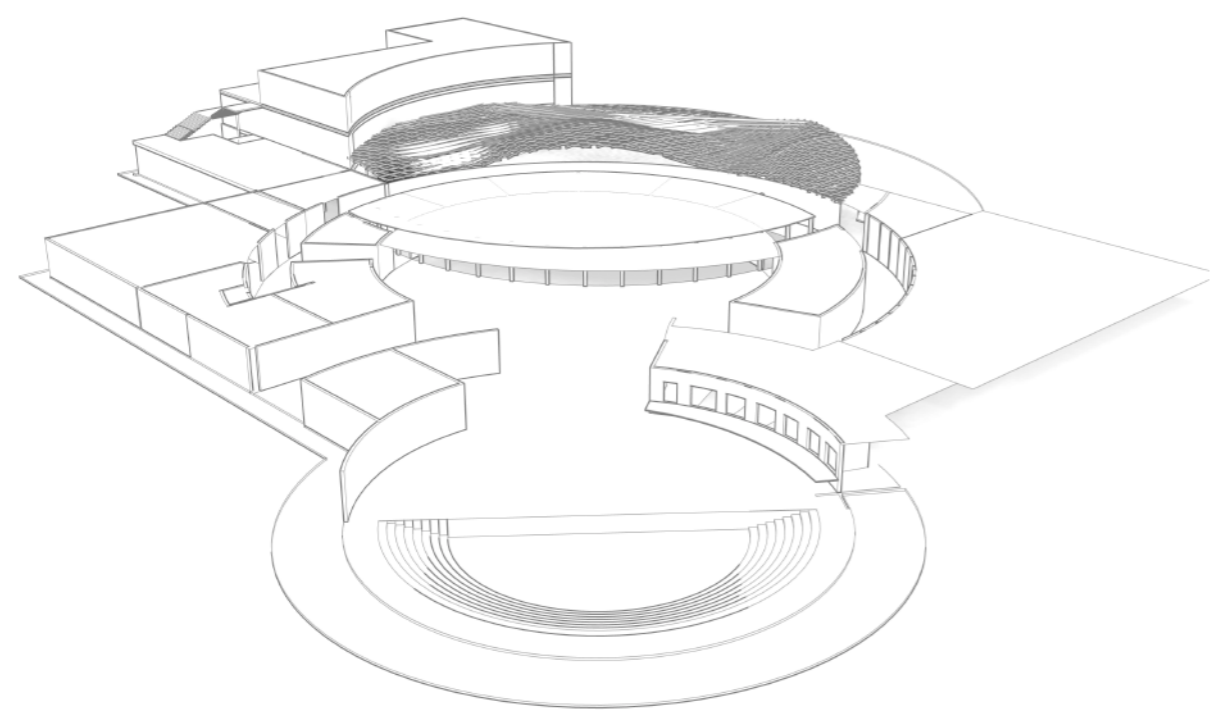
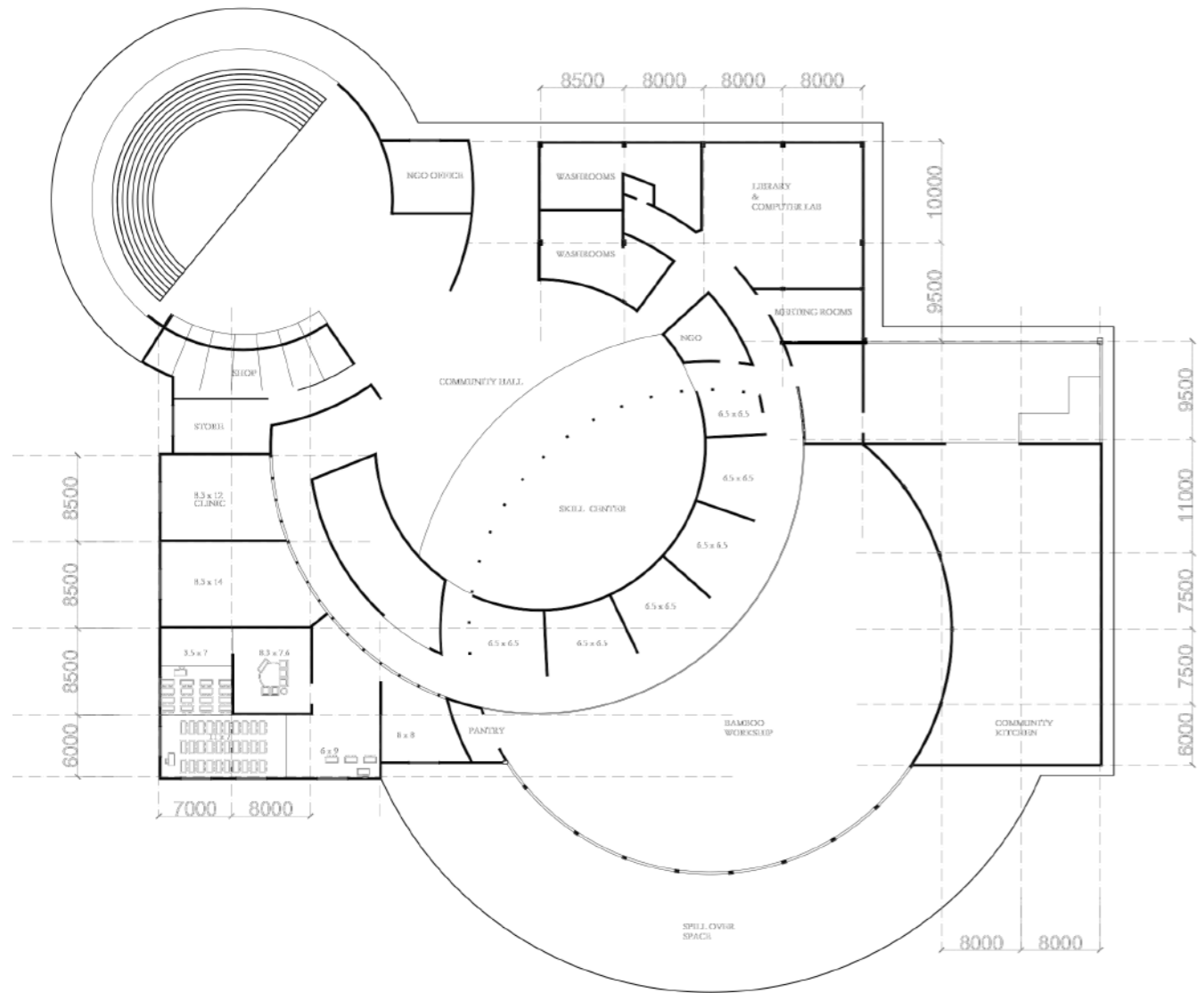
OPEN SPACES



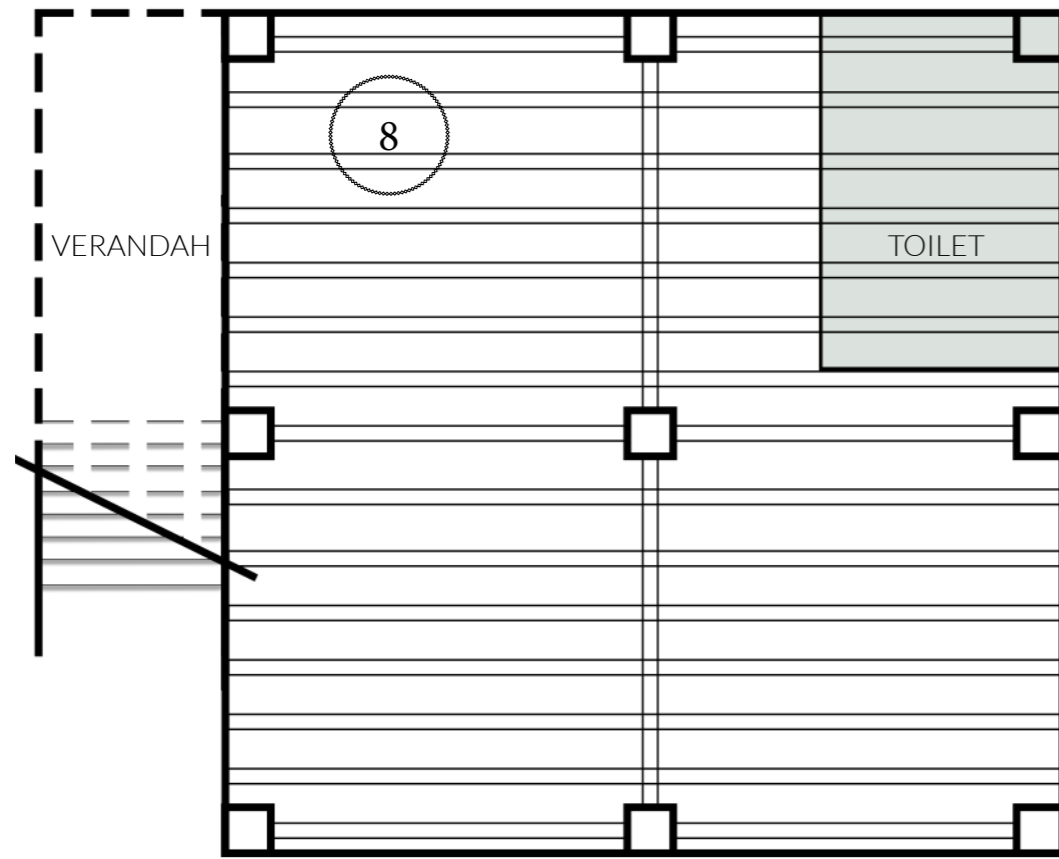
PLOTS



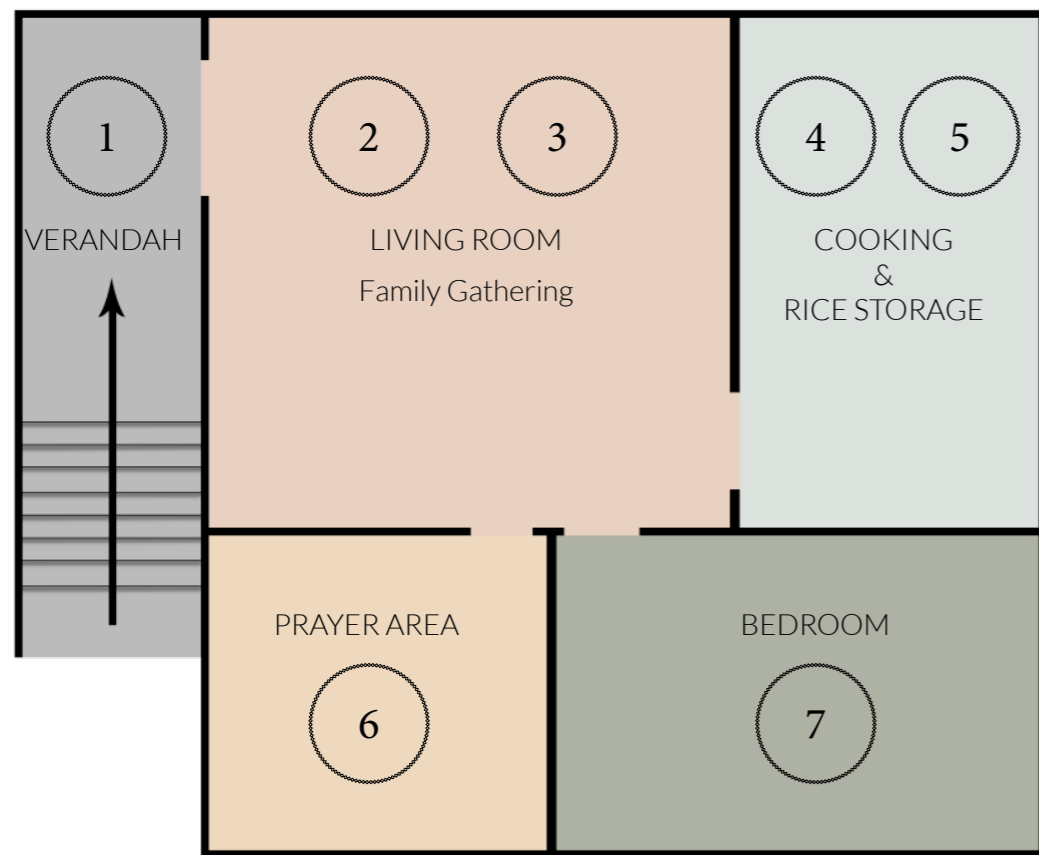
SITE PLANNING



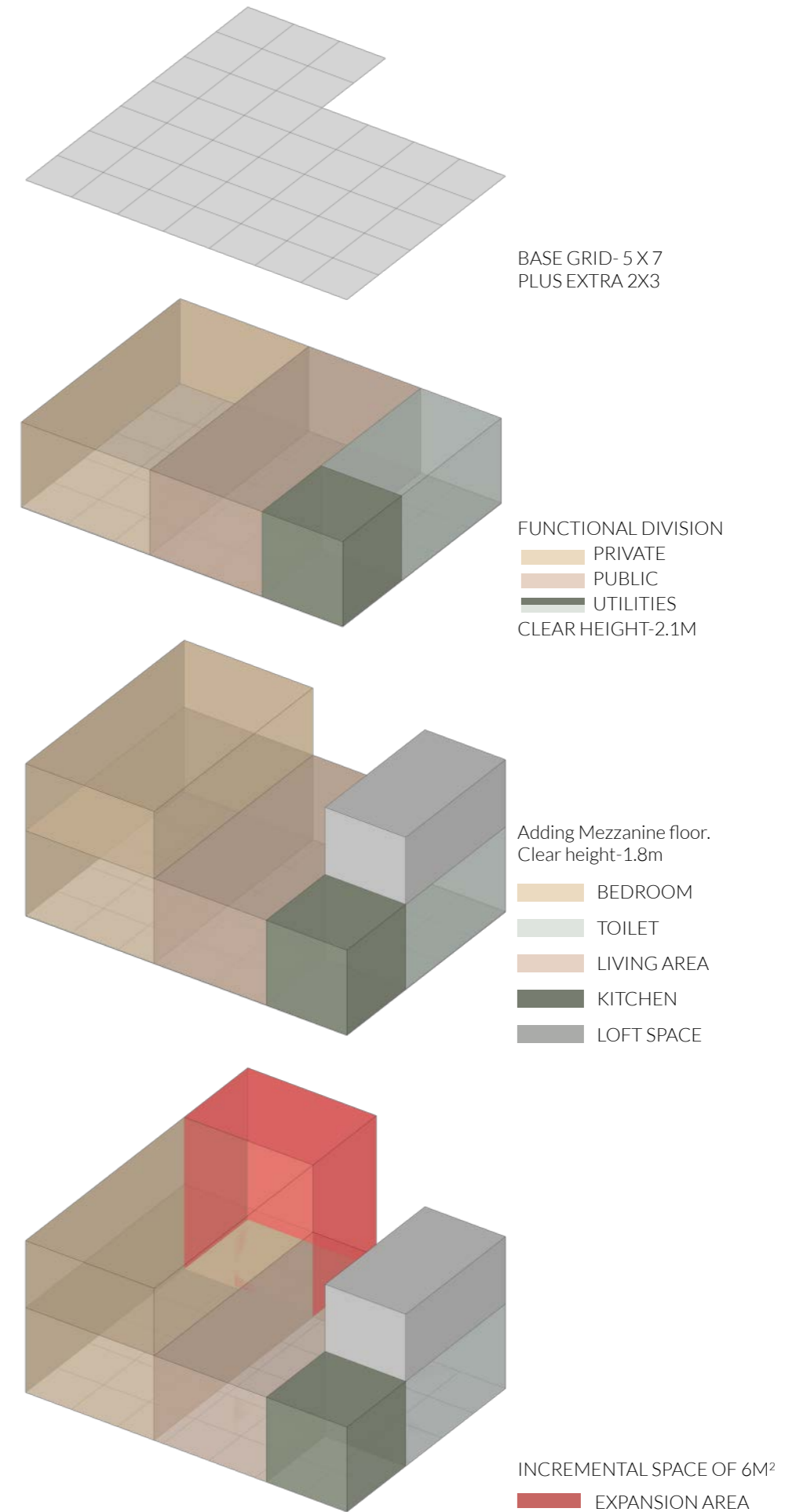
COMMUNITY CENTER

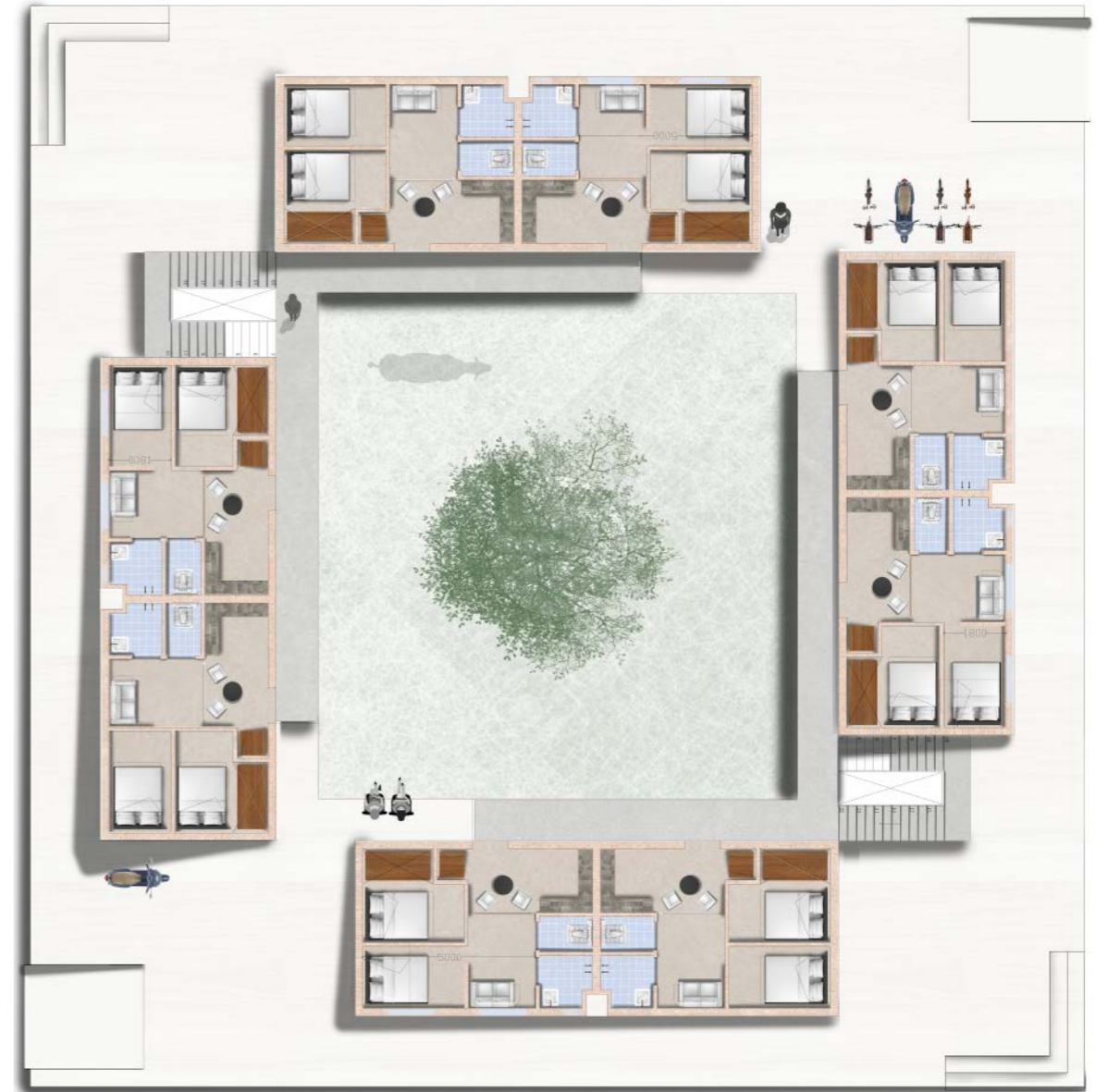
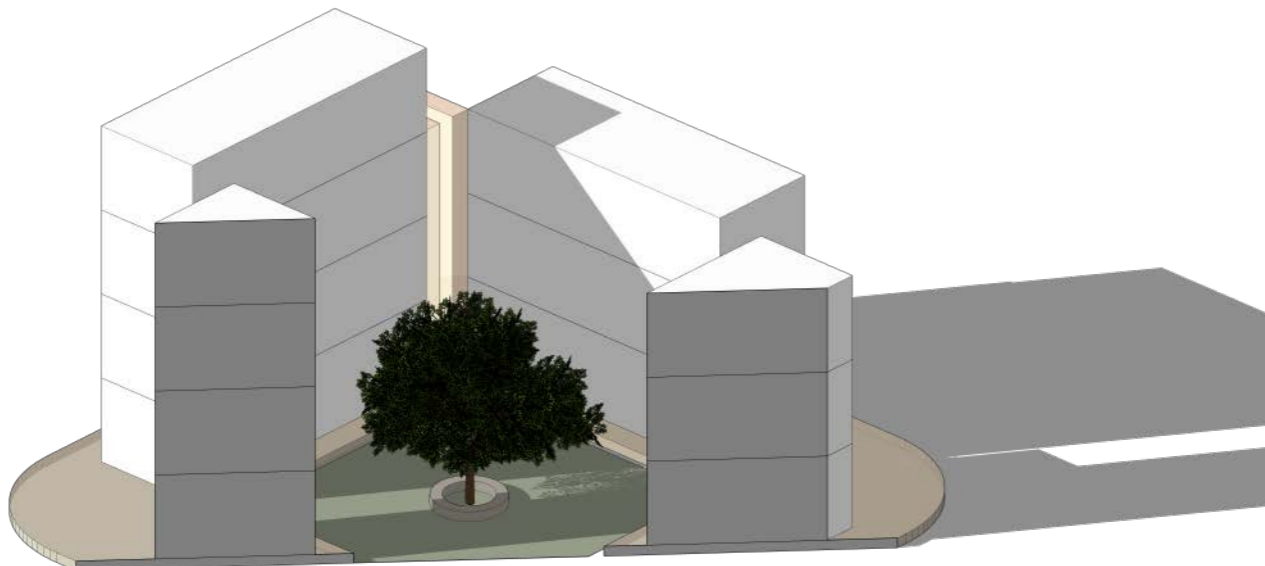
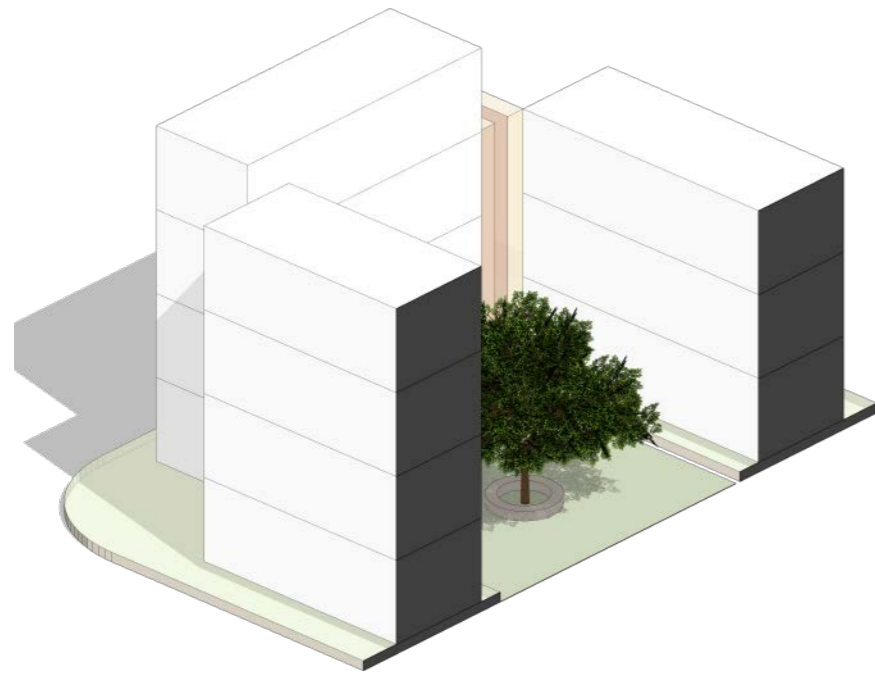
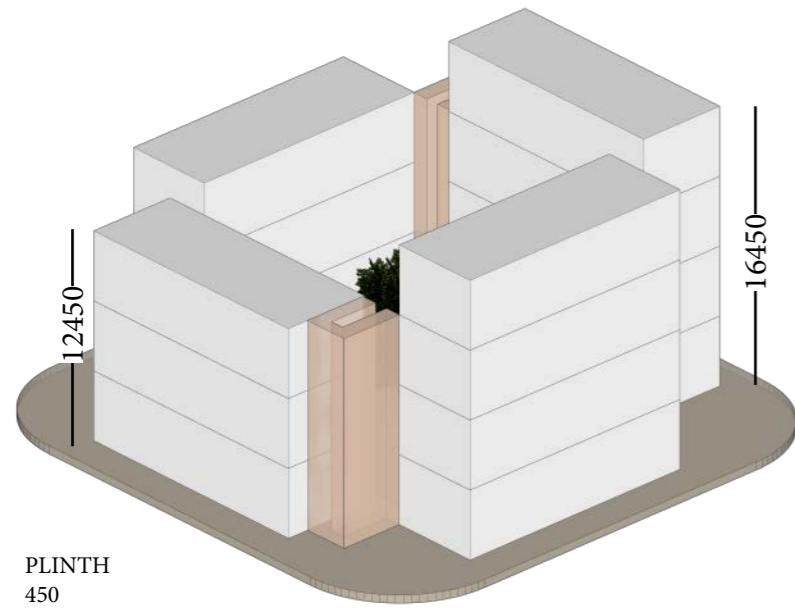


GROUND FLOOR PLAN



STILT PLAN





CLUSTER PLAN



URBAN DESIGN

Reclaiming the city in sync with its wellbeing requirements.
Site-Mehrauli Badarpur Road (settlements along it)
Area chosen for intervention- Madangir & Dakshin Puri

Interventions based on a preliminary study about its :

- History and Culture
- Location and Connectivity, Topography, Climate, Environment
- Ecology
- Demography
- Urban morphology
- Physical Infrastructure
- Social Infrastructure
- Traffic and Transportation
- Trade and Commerce (economy)
- Landuse & Administrative institutions & stakeholders

These parameters were studied to understand and the overall wellbeing of the site as well as its inhabitants. Inferences from these helped map out the entire site in terms of its opportunities and problem areas to further identify intervention strategies

This project was completed as a group of three.

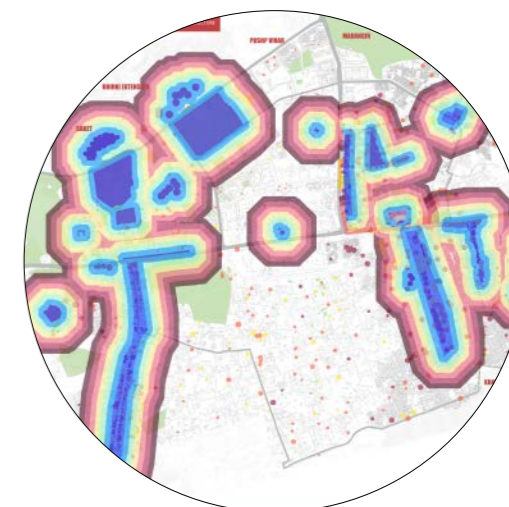
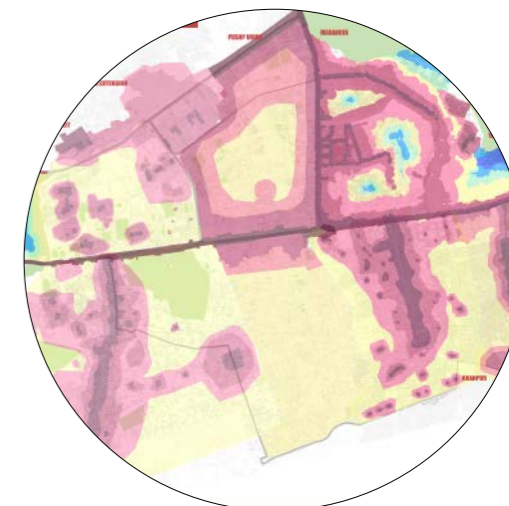
SITE

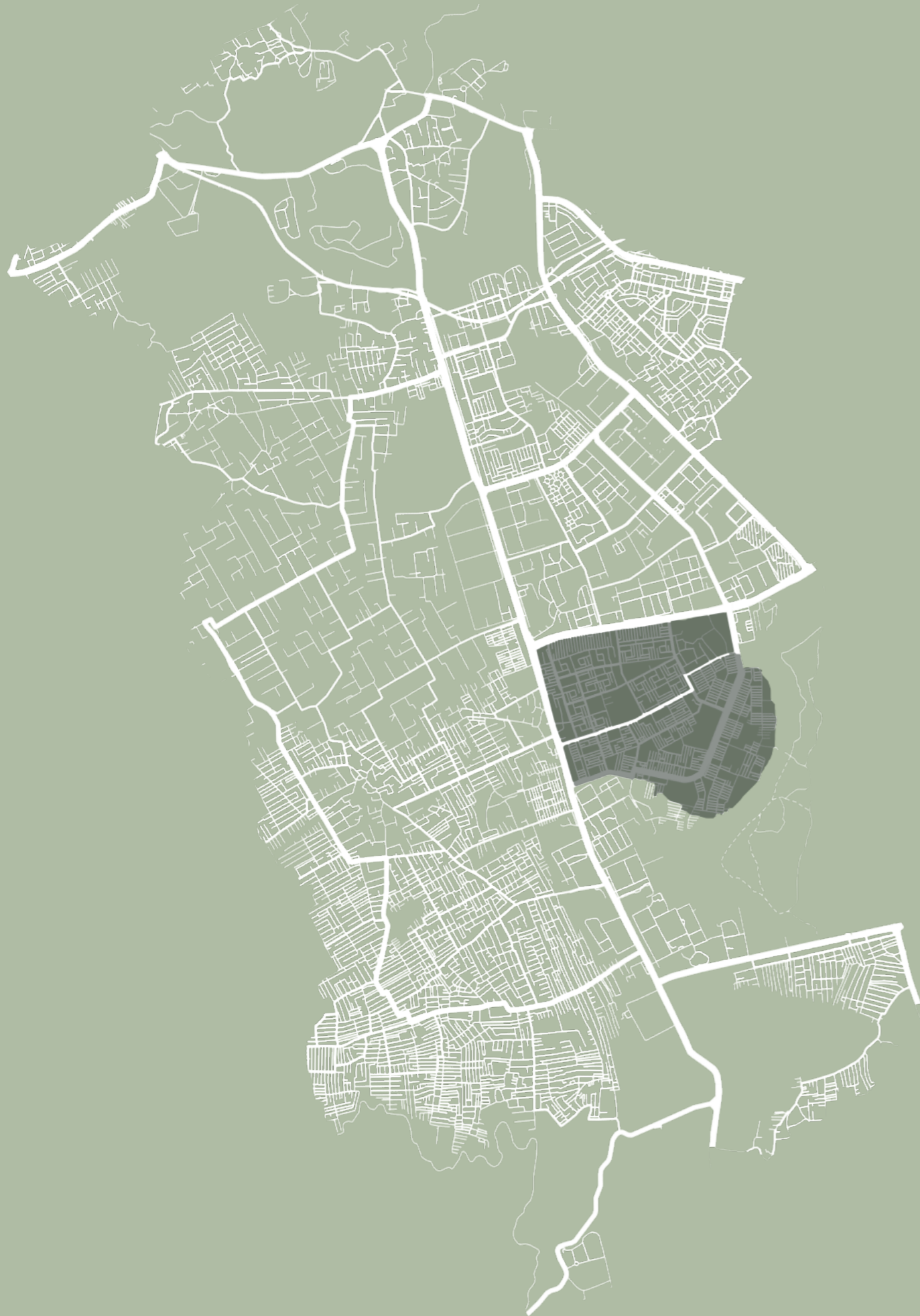
Badarpur Mehrauli road, zoomed into the Madangir, Dakshinpuri Area

INTERVENTIONS

Three typologies were chosen for the urban re invention in a macro to micro approach

- Decongesting the traffic junctions around the site entries
- Renovate Main Market in madangir
- Reorganise repetitively placed Parks between the residential pockets



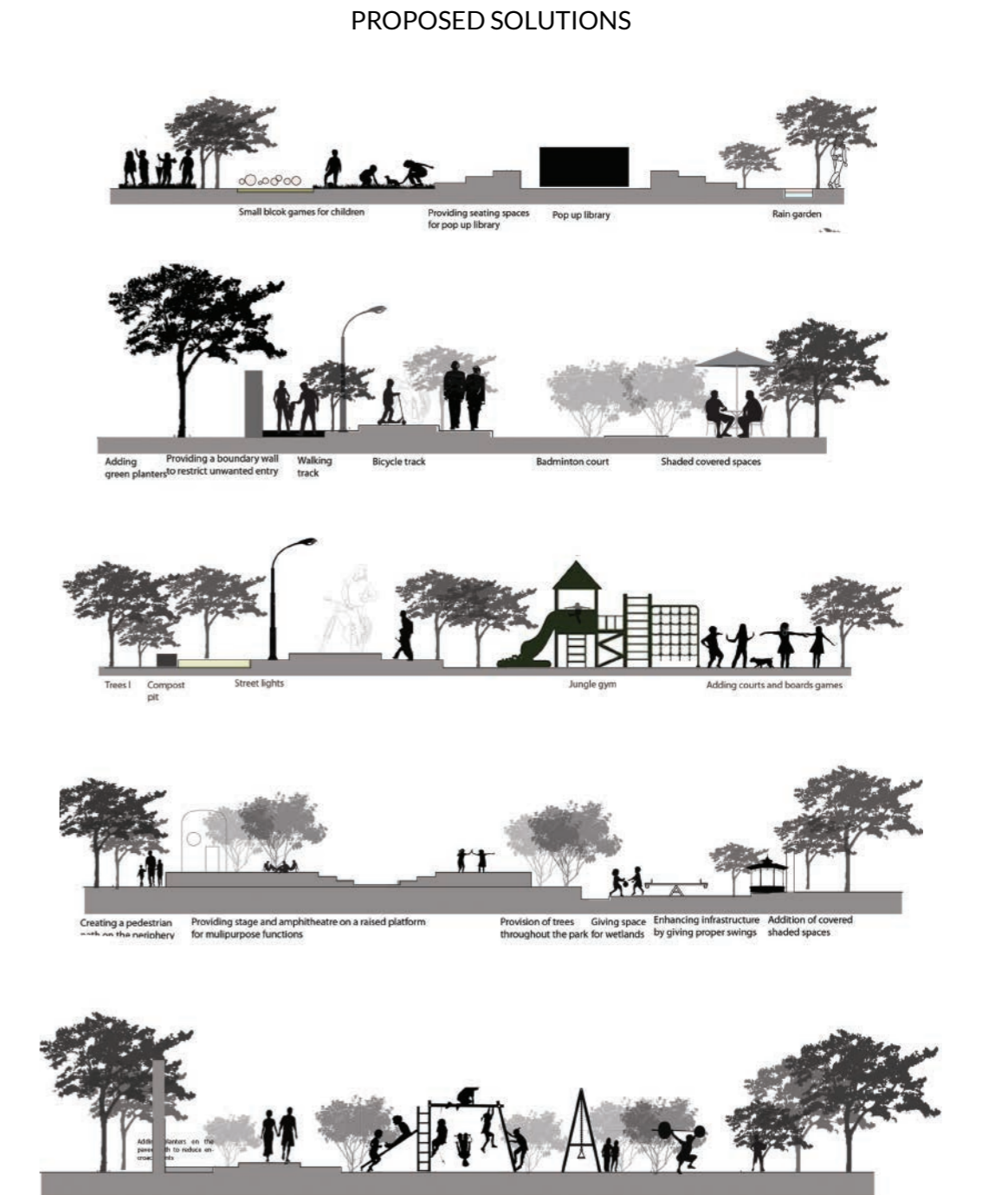
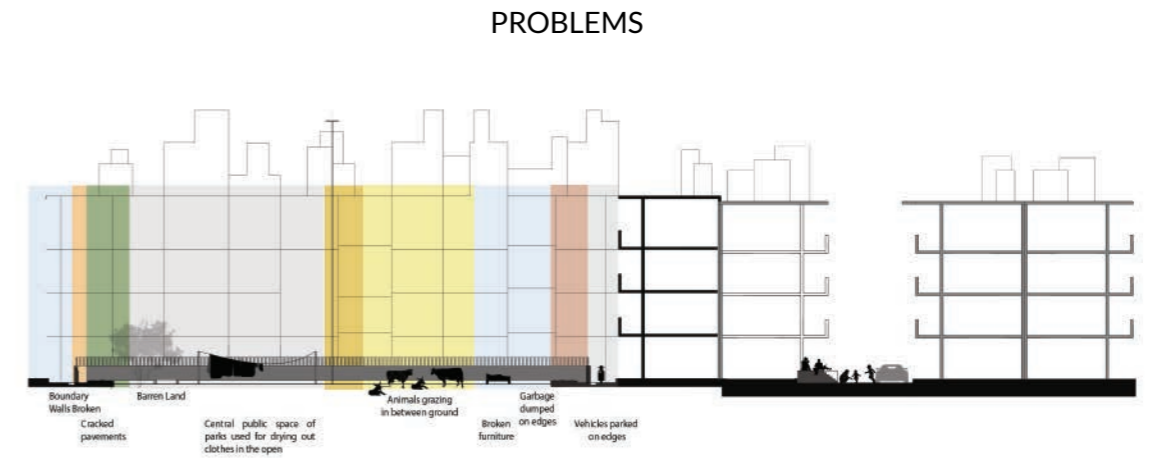


SITE



- ORGANISING TRAFFIC
- DEVELOPING GREENS
- REDEVELOP MADANGIR MARKET

PROBLEM IDENTIFICATION & SITE SELECTION



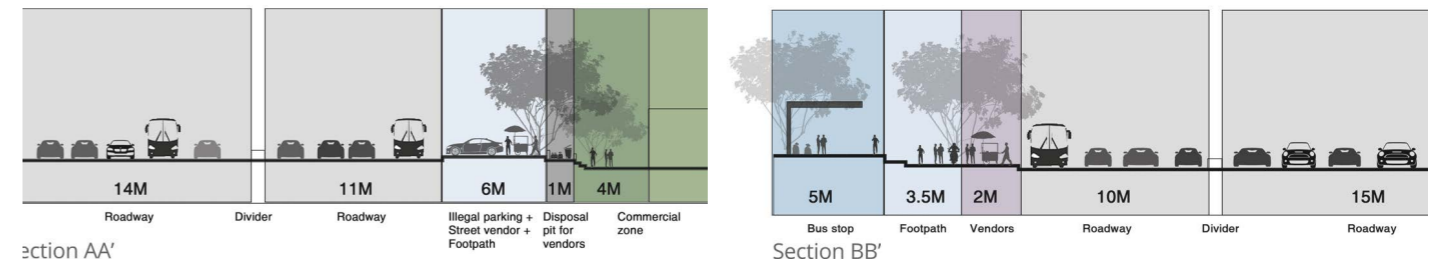




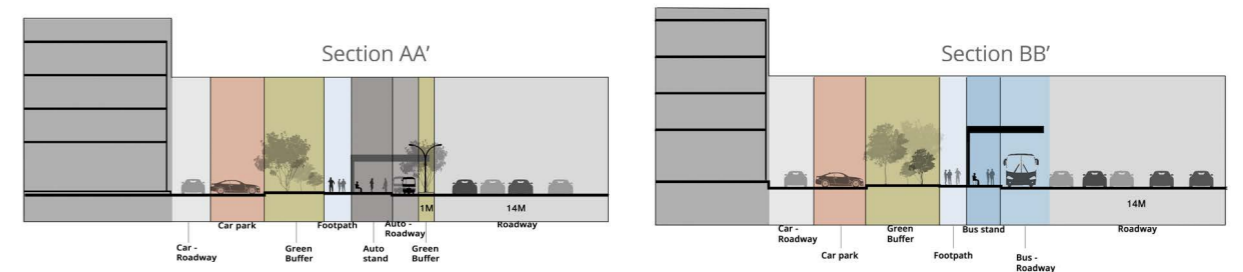
TRAFFIC JUNCTION



CURRENT SITE CONDITION

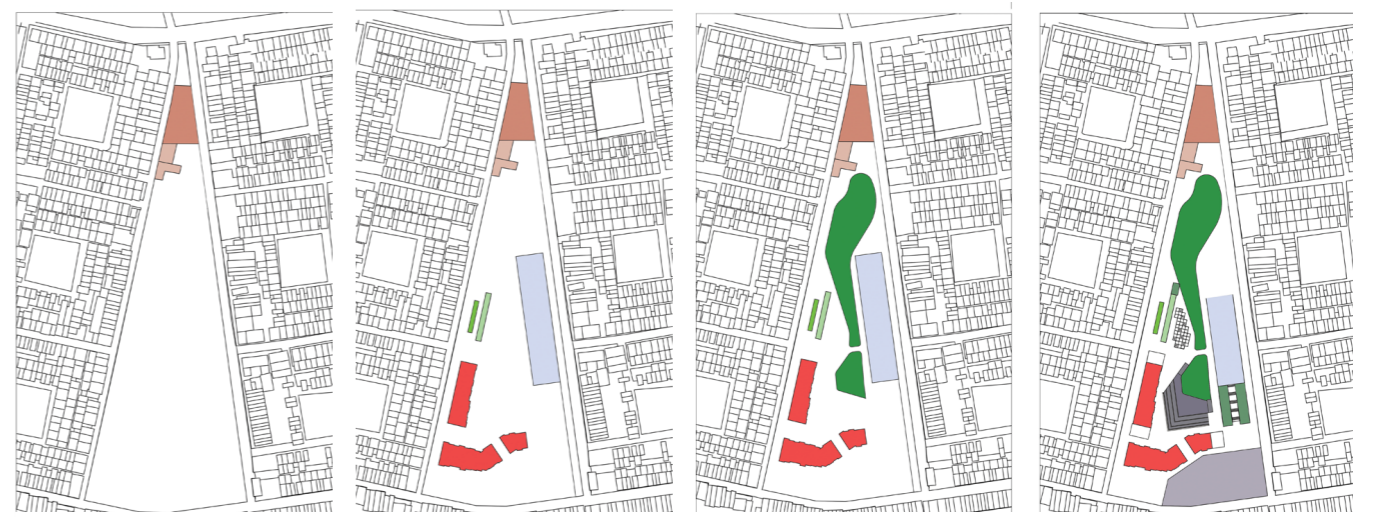
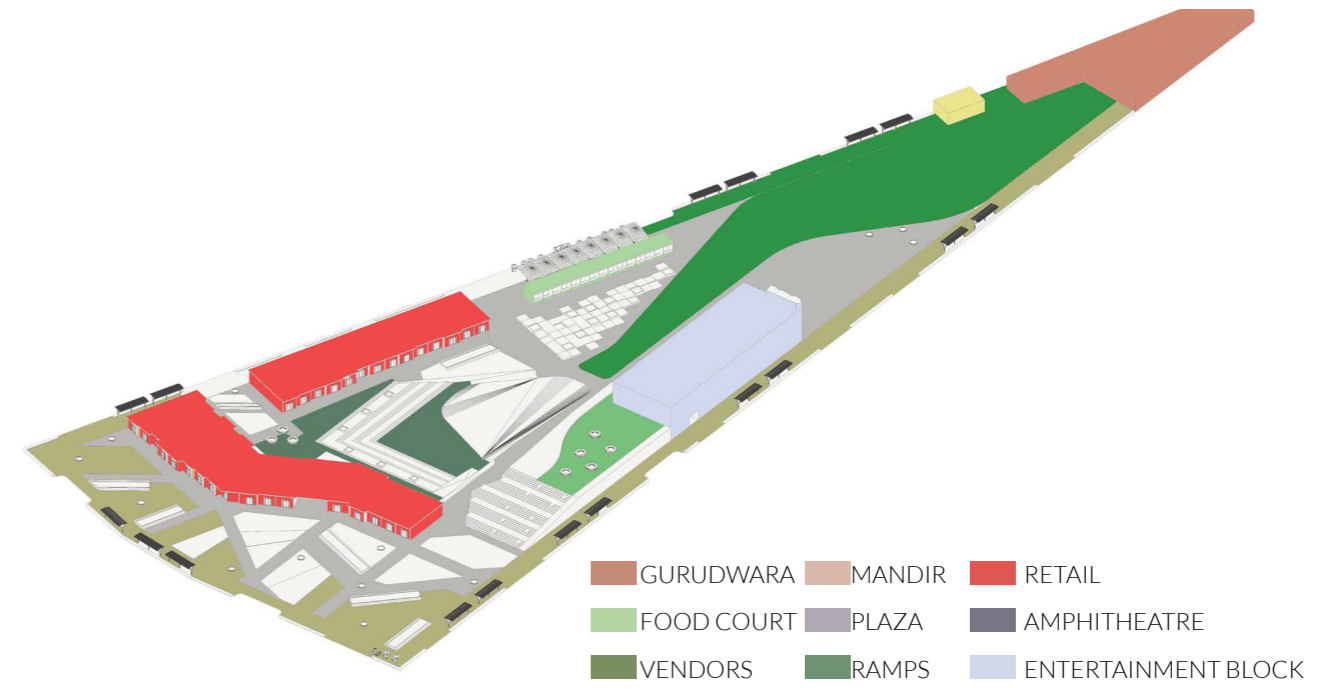
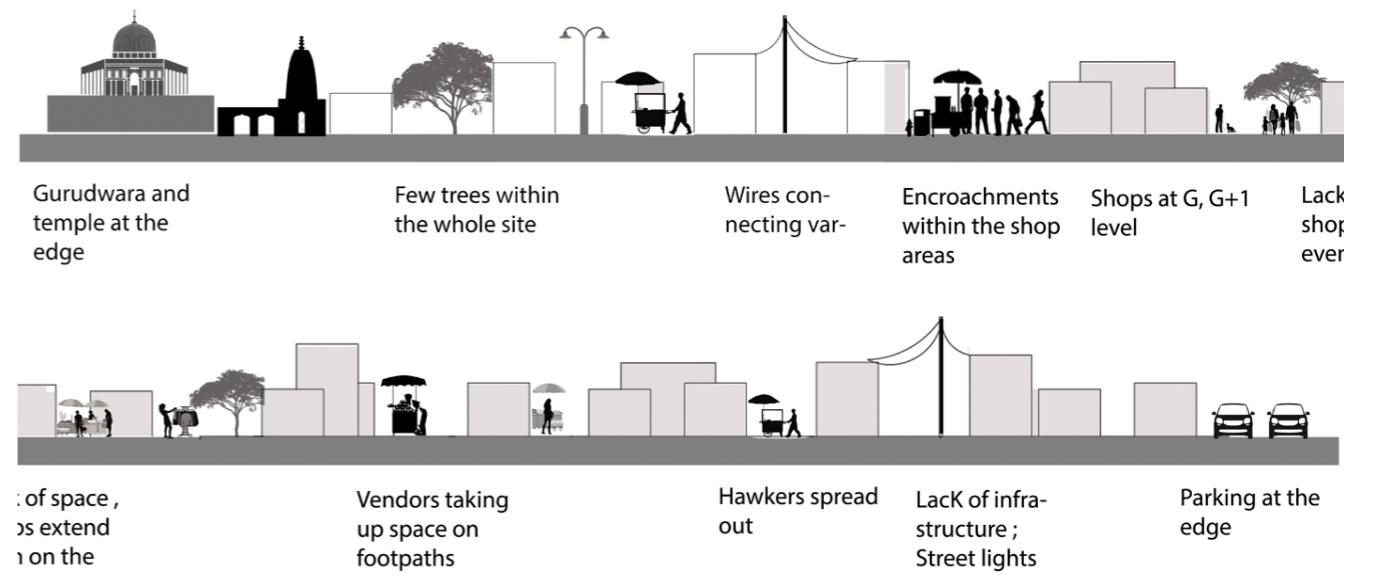


PROPOSED SITE



DECONGEST JUNCTION NEAR BUS DEPOT





MADANGIR MARKET AREA





ANDC

60TH ANNUAL NASA DESIGN COMPETITION

CONCRETE TO GREEN : CREATING SUSTAINABLE STEPS

REIMAGINNG ALTERNATIVE URBAN SPACES THAT INSPIRE COMMUNITY INTERACTION.

The breif was to identify an abandoned public space that has potential to be a vibrant urban social space. The idea was to transform these abandoned public spaces and re-imagine "ALTERNATE SPACES" that inspire Community Interaction.

It aimed at an involvement in real life hands on construction program and mitigating the challenge to keep the budgets affordabable and ensure ecological materials.

SITE

We collaborated with SWECCCHA (an NGO) for a site in Vasant Kunj that they had adopted for their first airshed park in Delhi.

SITE AREA

2890 sq m

USED SPACE

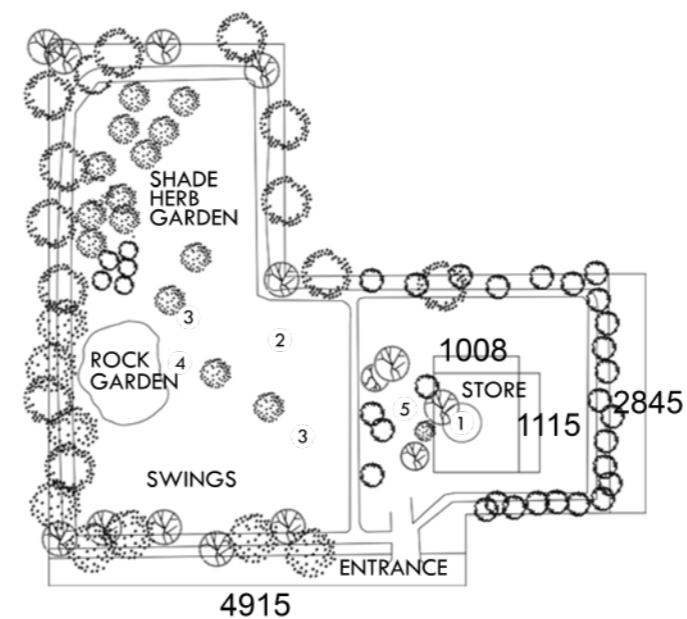
210 sq m

AIM

Utilising maximum site potential and converting it into a community project by integrating the needs of all age groups and involving the neighborhood into it.

- Convert an old store into a pop up library.
- Construct a bamboo pavilion : shade and play
- Use recycled materials to create seating.
- Make a compost pit.
- Grow small planters on the edge of the park.
- Create a garden shed.
- Involve children around the site to help in gardening and painting.

[Click to watch our journey.](#)



- 1 -Library
- 2 -Bamboo Pavillion
- 3 -Tyre Seating/swings
- 4 -Compost Pit





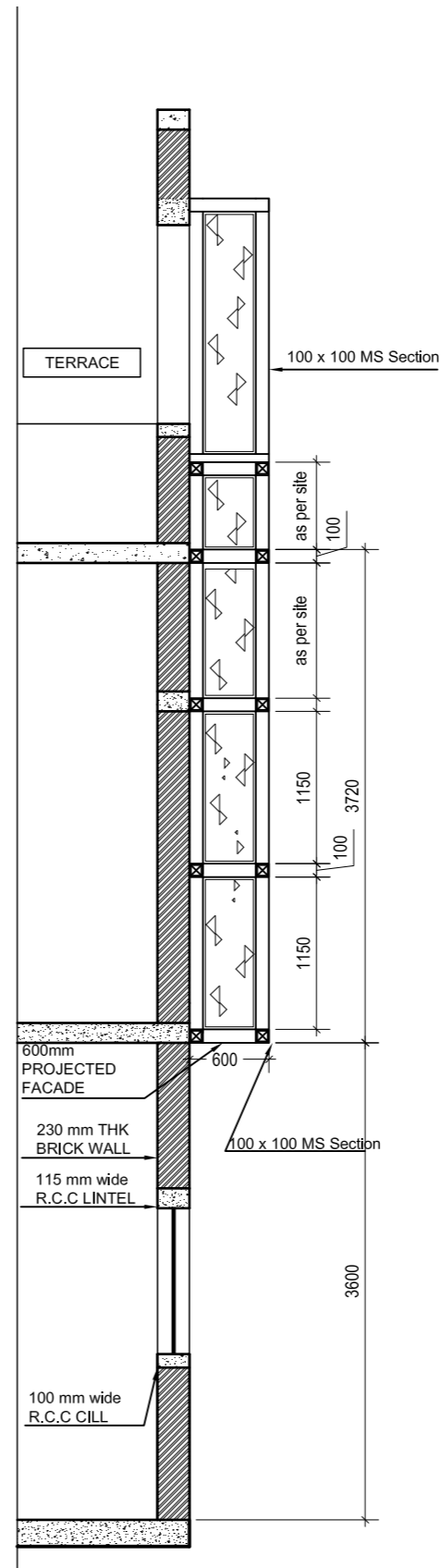
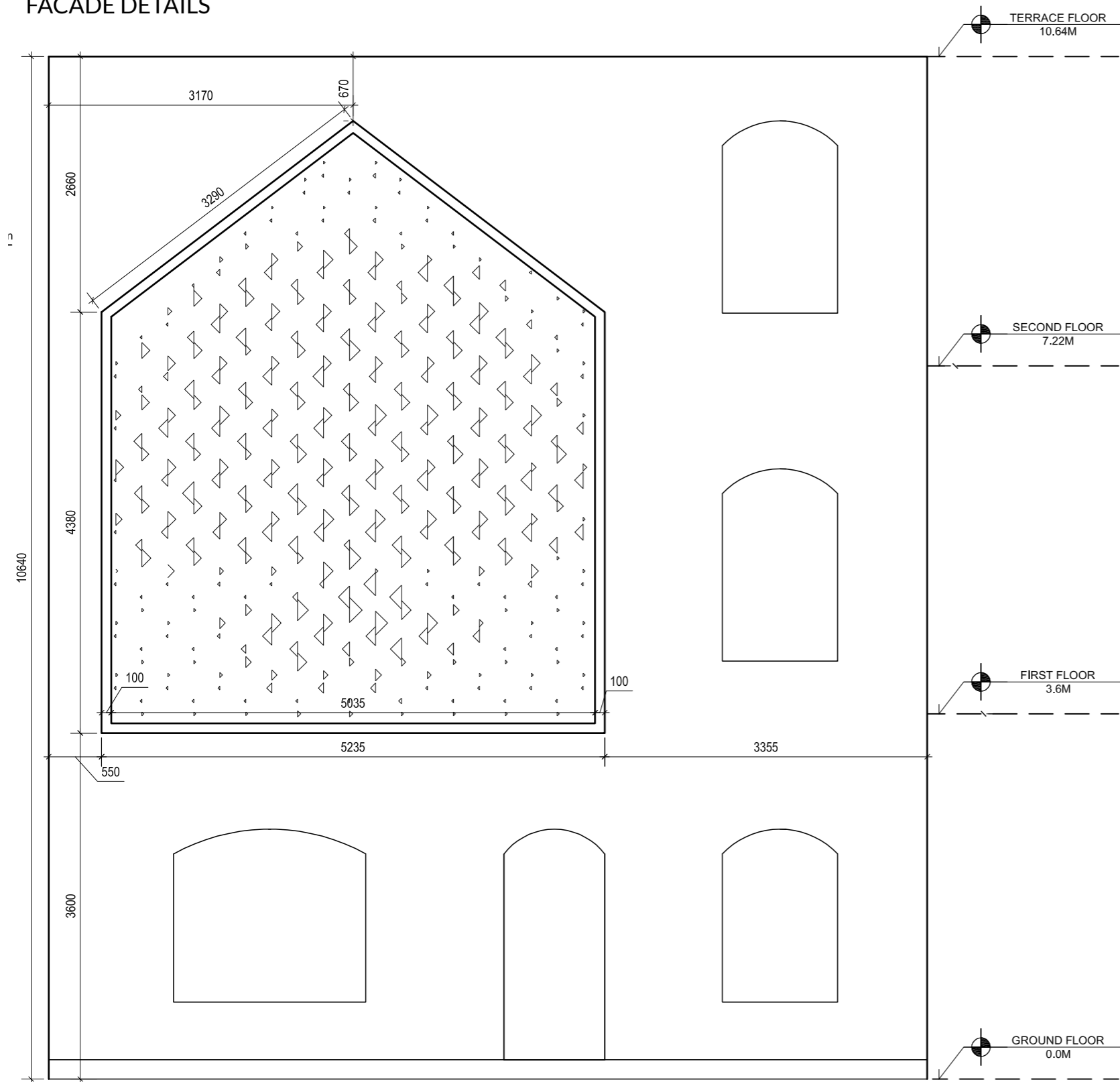
KAROL BAGH RESIDENCE

FAMILY OF FOUR

A Family of a set of elderly parents with two children, (both adults) was looking to renovate their house before the onset of their kids marriages.

RESIDENTIAL

FACADE DETAILS



Facade & MS frame

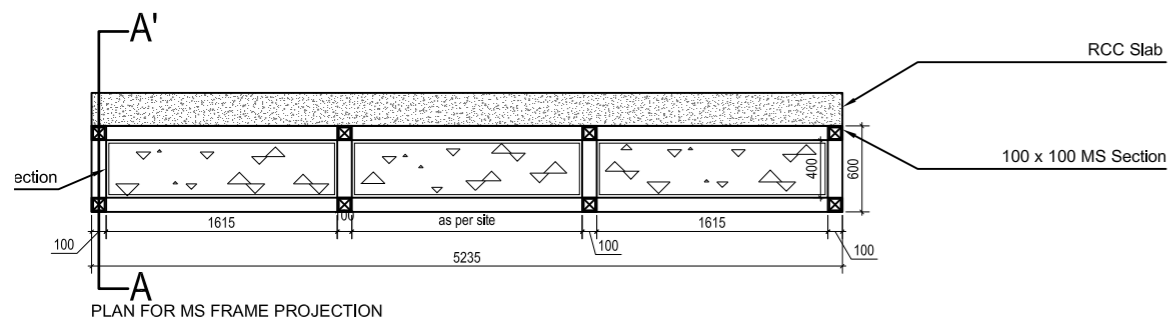


Parapet Detail



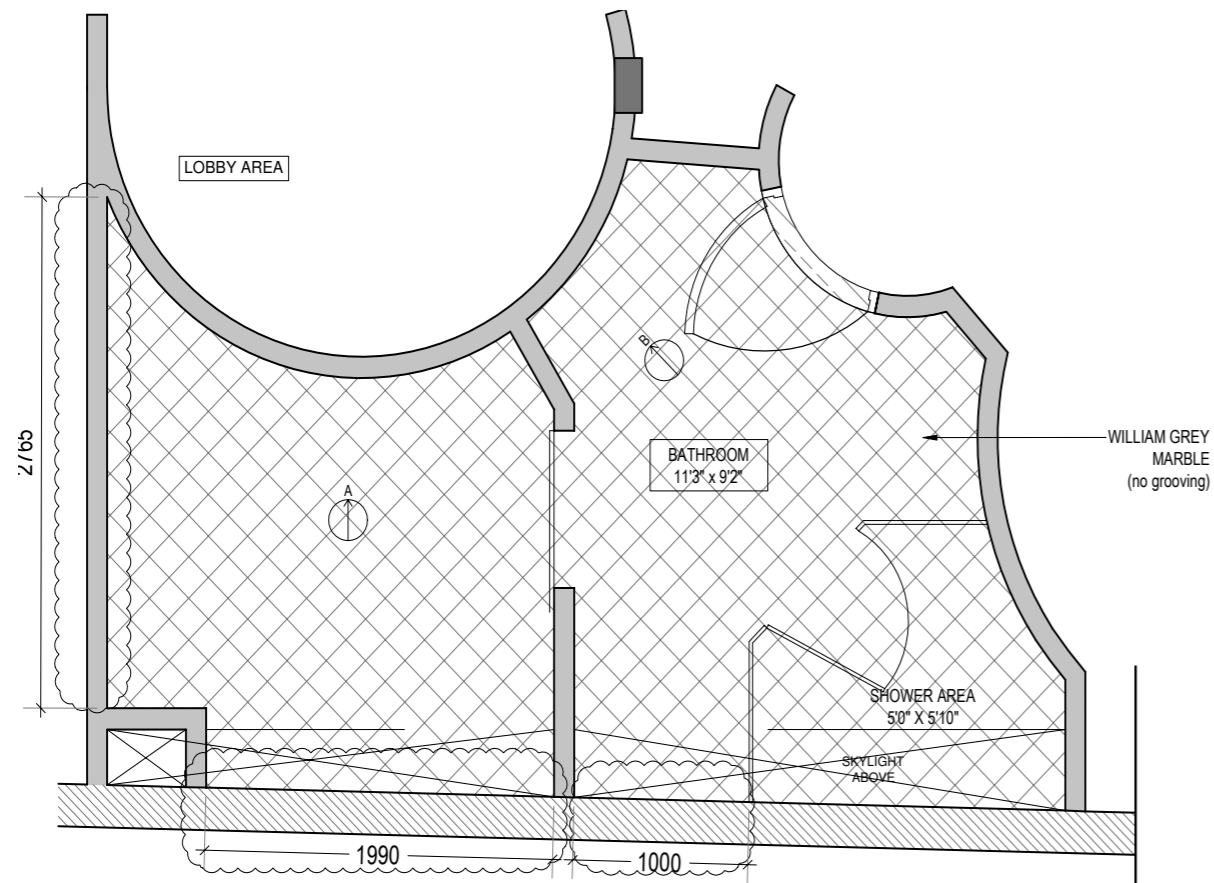
MS Frame welded angle

CHANGE IN OPENING LEVELS



SECTION AA'
SCALE- 1:50

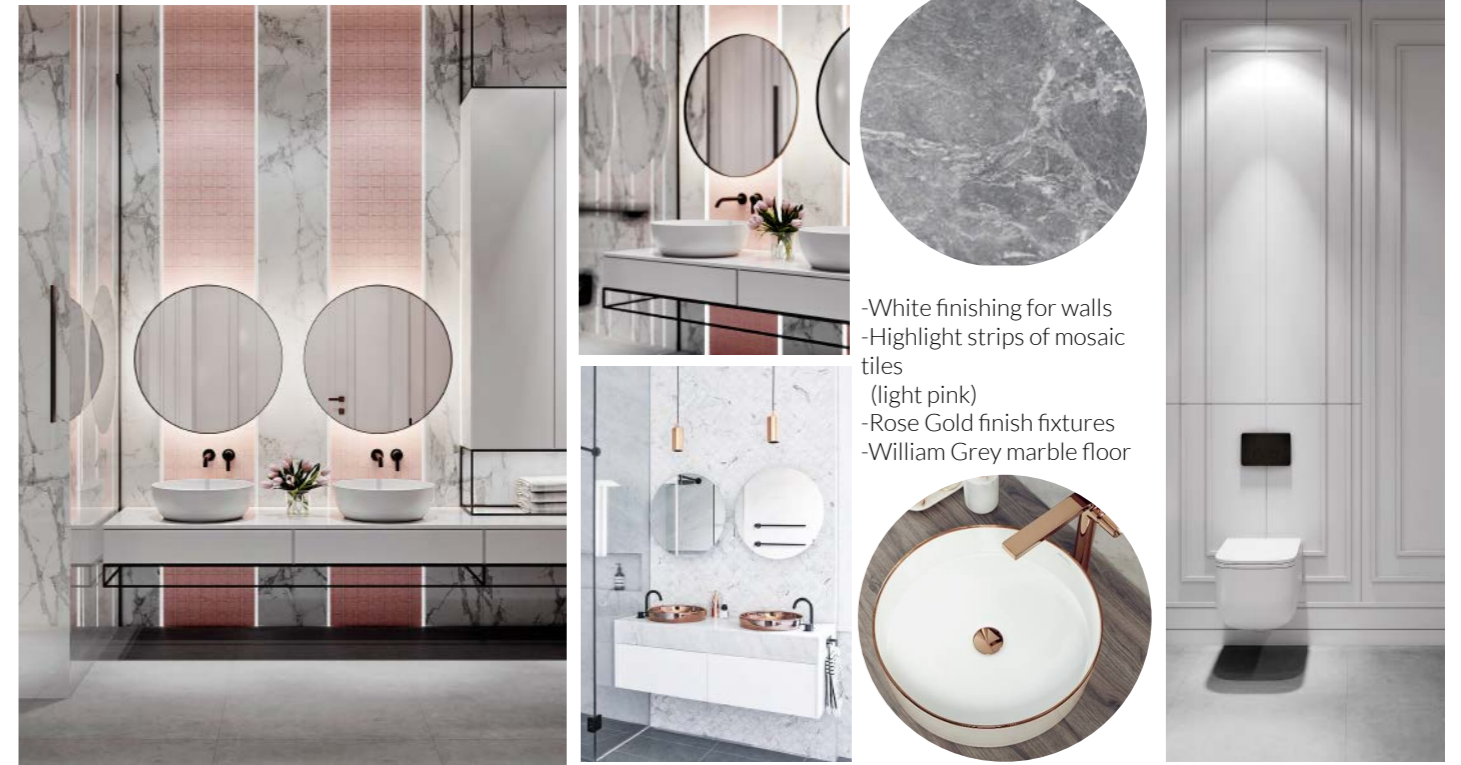
BATHROOM DETAILS



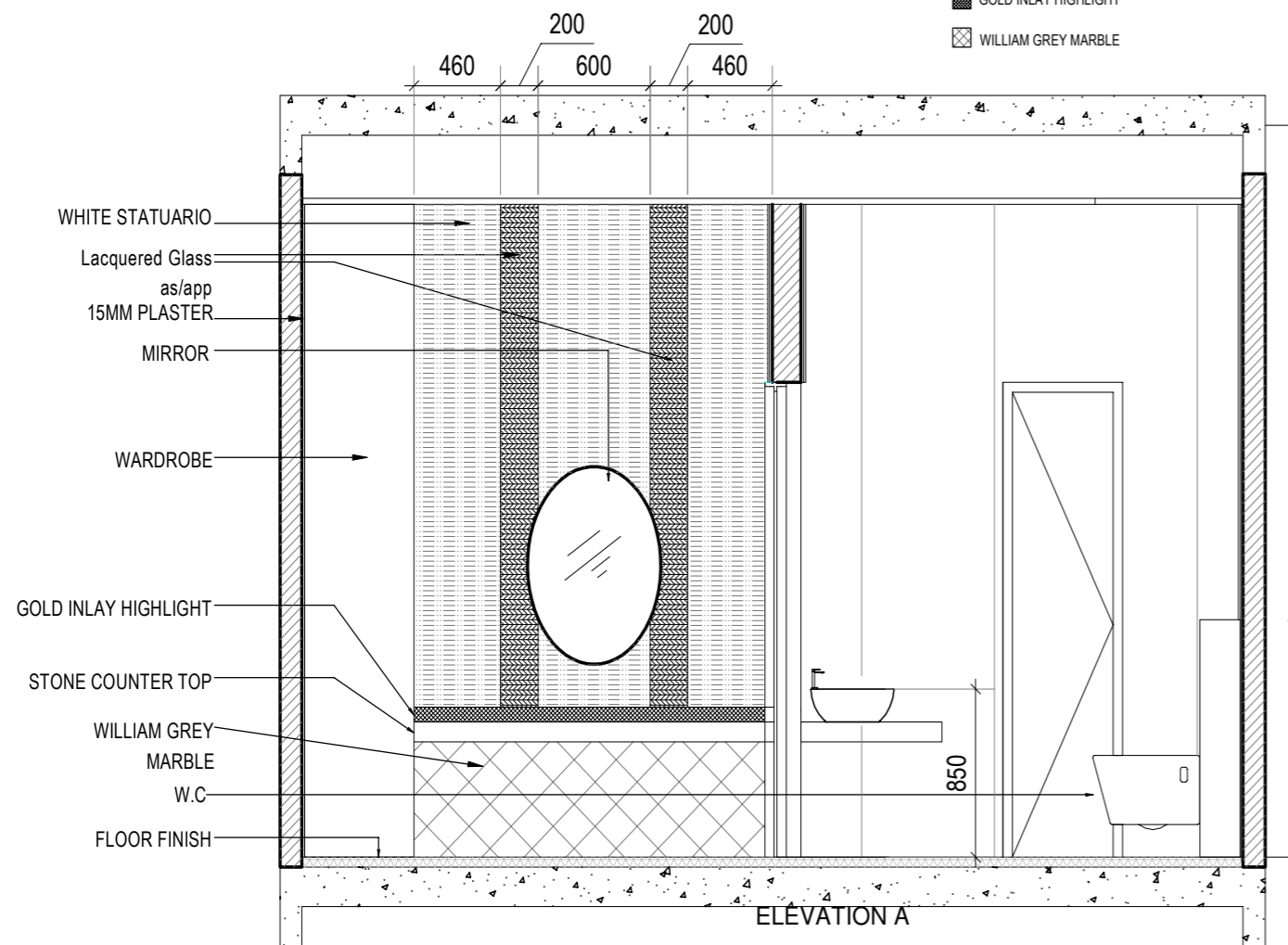
STONE FLOORING LAYOUT

- WHITE STATUARIO
- LACQUERED GLASS (PINK) as/app
- GOLD INLAY HIGHLIGHT
- WILLIAM GREY MARBLE

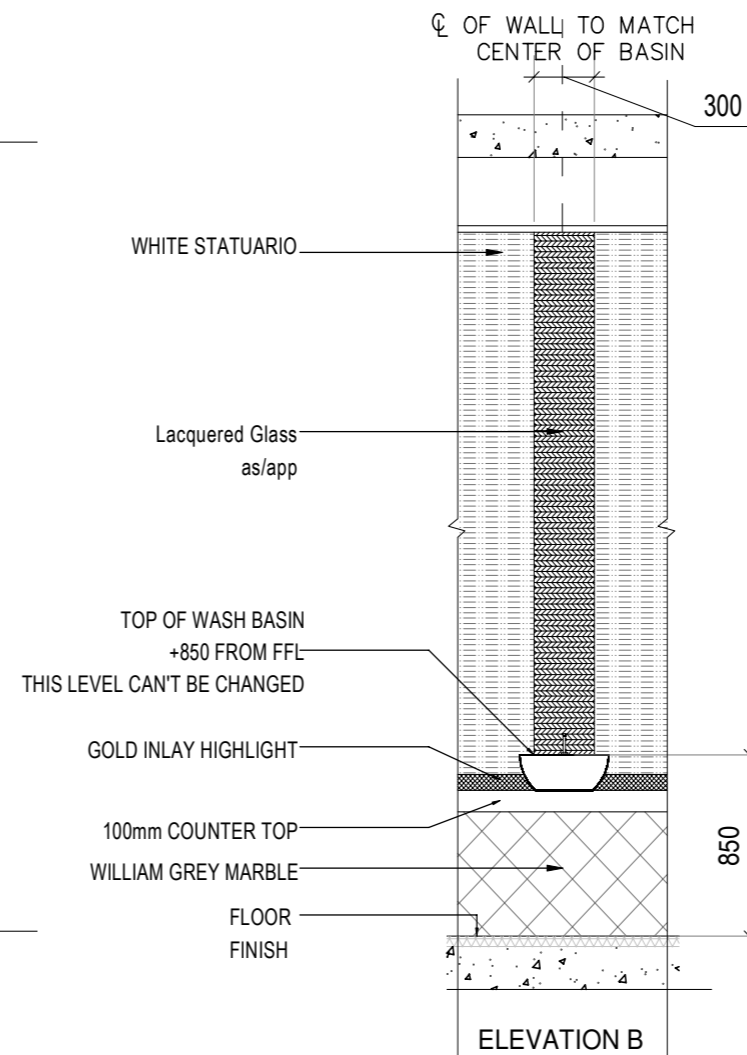
INTERIOR MOOD BOARD



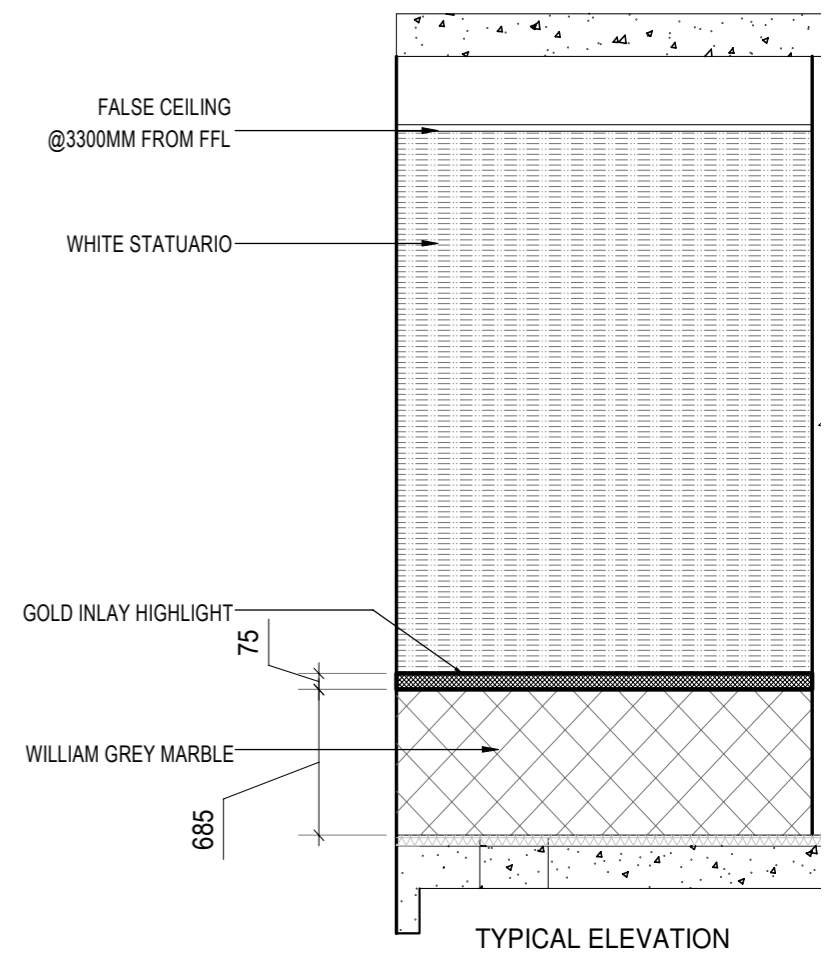
- White finishing for walls
- Highlight strips of mosaic tiles (light pink)
- Rose Gold finish fixtures
- William Grey marble floor



ELEVATION A



ELEVATION B



TYPICAL ELEVATION

BAMBOO WORKSHOP - CEPT

EXPLORATIONS IN MODULAR ASPECTS OF HYPERBOLIC PARABOLOID FORMS

The idea behind the course was to provide a hands on experience by exposing everyone to multiple methods of playing with a particular shape. For us , these hypars were modules which made us act instinctively . Also, the process of making seemed easy because of the simplicity of straight lines.

In addition , the characteristic adaptability, economy and constructability of the materials used, made it much more usable.

OBJECTIVES:

CLARITY OF FORM
Paper modules , alternation and exploration using the material (paper)

PRECEDENTS STUDY
Three structures taken as a base for study, prototype models

HUMAN SCALE MODEL
Bamboo used as the base material to make two of the selected prototype structures.

